

SHARP®

BIG PERFORMANCE AND PRODUCTIVITY IN A COMPACT DESIGN



DX-B350P
DX-B450P

What are your business printing needs?

When it comes to office workgroup printers, what are your needs? Do you need them to be fast, efficient, and dependable? Do you need them to have flexible document handling and easily integrate into your network infrastructure? Do you need them to physically fit into your office environment and be easy to use, manage and maintain? Do you need professional crisp, clear documents that reflect your organization's image? And do you need them to be economical and provide low cost of operation? If so, then the Sharp DX-B350P and DX-B450P Series of workgroup laser printers may be perfect solution for your office workgroup.

Faster speed, robust productivity & workhorse performance

With blazing speeds of up to 45 pages per minute, true 1200 x 1200 dpi print resolution, two standard paper drawers—and the ability to add two more, advanced finishing options like automatic two-sided printing and offset stacking, advanced network connectivity and security, and long-life toner cartridges, these high-performance printers are business workhorses. The Sharp DX-B350P and DX-B450P—faster documents, greater productivity, more efficiency and dependability you can count on. What more do you need?



The latest advancements at your command



- Fast Printing Speed – 45 ppm (DX-B450P)/35 ppm (DX-B350P)
- Powerful 533MHz processor helps enhance productivity in busy office environments
- 128MB RAM—expandable to 640MB to help increase performance and productivity
- Compact footprint to fit most business environments, yet expandable to meet demanding document usage
- Dual paper drawers with automatic paper size sensing—for up to 700 sheets of standard paper capacity and is expandable to accommodate two additional drawers for up to 1,800 sheet capacity
- Document finishing options—such as automatic duplexer and offset stacker, helps reduce paper consumption and enhances workgroup productivity
- PCL® 5e, PCL 6 and Adobe® Postscript® 3 emulations with automatic emulation switching enables efficient cross-platform support
- Embedded web page allows IT administrators to easily configure and manage the device to help reduce support costs and increase efficiency
- Advanced network and document security helps ensure privacy and adherence to company workflows and regulatory compliance

Easily integrates into your IT environment

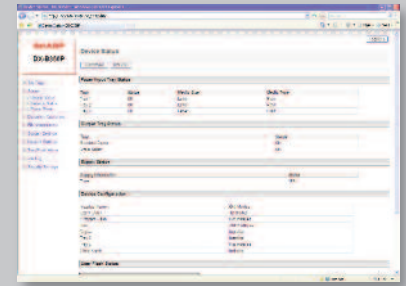
The Sharp DX-B350P and DX-B450P were engineered to efficiently and effectively integrate into your IT infrastructure. They provide a suite of powerful easy-to-use tools to manage, monitor and maintain your fleet of Sharp document devices—all designed to increase workgroup productivity and IT efficiency. IT and help desk professionals will benefit from its device management capabilities including: Embedded Web Page, Printer Status Monitor, Automated E-mail Alerts of error conditions, and compatibility with Sharp's Printer Administration Utility (PAU) and HP® Web Jetadmin®. It's intuitive Windows® print drivers provide a graphical user interface to simplify operation and improve workgroup productivity. And they simultaneously support multiple operating systems with automatic emulation switching. There are even utilities to help manage soft fonts and macros for vertical market applications.

Network, device and document security you can count on

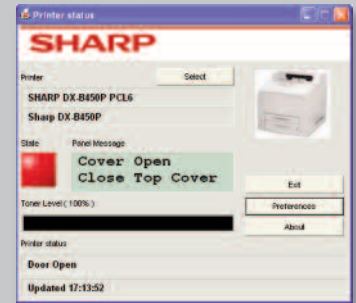
Sharp has a long history of incorporating award-winning security technology into its line of workgroup MFPs and we've carried that heritage over to the DX-B350P and DX-B450P workgroup laser printers. At Sharp, we believe in multi-layered security that protects your network, your device and your documents. There's no need to worry about unauthorized personnel changing device settings since these printers incorporate administrative access control and a panel lockout feature. Network security features such as Port Control and IP Filtering help protect against non-authorized network access. And with the optional 40GB Hard Disk Drive Kit, confidential documents can be securely retained until you're ready to release them at the device by inputting a user-specified PIN.

Expandable document handling versatility

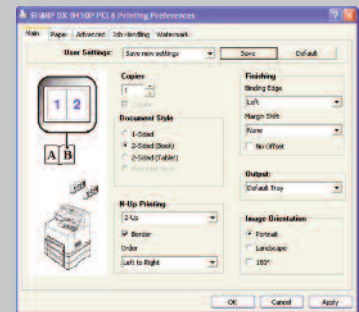
As your business needs change, so can the Sharp DX-B350P and DX-B450P. Two additional paper drawers can be added to accommodate up to 1,800 pages of on-line paper and up to 4 different paper types or sizes. It even automatically senses what paper size is in each paper drawer to help ensure that documents are printed correctly the first time. Its optional automatic duplexer provides two-sided printing allowing you to reduce your paper consumption by as much as 50% for a greener work environment. And an optional offset stack tray helps organize the multiple document sets and separate print jobs.



Embedded Web Page



Printer Status Monitor



Easy-to-Use Print Drivers



DX-B350P/DX-B450P SPECIFICATIONS

General Specifications

Type:	Workgroup network printer
Printing System:	Electro-photographic laser
Print Speed:	DX-B350P: Up to 35 ppm (letter size) DX-B450P: Up to 45 ppm (letter size)
CPU:	MIPS RM7035 - 533MHz
Memory:	128 MB expandable to 640 MB, User Flash 12 MB
First Print	DX-B350P: Approx. 9 sec (letter size, simplex)
Output Time:	DX-B450P: Approx. 8 sec (letter size, simplex)
Warm-Up Time:	Maximum of 17 seconds from power on
Print Resolution:	1200 dpi, 600 dpi
Weight:	DX-B350P: Approx. 46.3 lbs (unpacked base model - excluding toner cartridge) DX-B450P: Approx. 47.4 lbs (unpacked base model - excluding toner cartridge)
Dimensions:	16-39/64" (w) x 18-1/3" (d) x 15-59/64" (h)

Media

Paper Feed System:	Standard: Up to 700 sheet capacity (2 Drawer) (1) 150-sheet multipurpose drawer and (1) 550 sheet paper drawer Maximum: Up to 1,800 sheet capacity (4 Drawer) (2) additional 550 sheet paper drawers
Paper Types:	Paper drawers: 17-lb bond to 80-lb cover (64-216 gsm) Paper types include: plain, transparency, pre-punched, letterhead, color, pre-printed, bond, labels, cardstock, postcard and envelope
Paper Sizes:	Letter (8.5 x 11in), Legal (8.5 x 14in), Legal13 (8.5 x 13in), Executive (7.25 x 10.5in), Invoice (5.5 x 8.5in), COM9 (3.875 x 8.875in), COM10 (4.125 x 9.5in), Monarch (3.875 x 7.5in), A4 (210 x 297mm), A5 (148 x 210mm), A6 (105 x 148mm), B5 (182 x 257mm), C5 (162 x 229mm), DL (110 x 220mm), Custom - W: 76.2 mm (3.0 in) - 215.9 mm (8.5 in) and L: 127.0 mm (5.0 in) - 355.6 mm (14.0 in)
Duplex:	Optional
Output Capacity:	Standard: Up to 500 sheets (face down)

Connectivity

Interfaces:	Ethernet 10/100Base-T, Hi-speed USB 2.0, IEEE 1284 parallel (DB25), RS-232C Serial
Languages & Fonts:	PCL5e, PCL ⁶ 80 HP [®] compatible (99 scalable, 1 fixed fonts), 8 barcodes Adobe [®] PostScript [®] 3 [™] 136 standard Adobe scalable fonts Adobe Direct PDF 1.3
Print Drivers:	Windows [®] 98, Windows NT [®] 4, Windows 2000, Windows XP, Windows XP x64, Windows Server 2003, Windows Server x64, Windows Server 2008, Windows Server 2008 x64, Windows Vista [®] , Windows Vista x64, MAC OS ^X - including 10.2 through 10.5 (PPD)
Operating Systems:	Windows 98, Windows NT 4, Windows 2000, Windows XP, Windows XP x64, Windows Server 2003, Windows Server x64, Windows Server 2008, Windows Server 2008 x64, Windows Vista, Windows Vista x64, MAC OS-X - 10.2 through 10.5, Unix [®] and Linux [®] (Redhat 7.3, 8.0, 9.0; Sun Solaris 8, 9, 10; SUSE Linux Professional 9.1, 9.2, 9.3; HP-UX 11i)
Protocols:	TCP/IPv4, UDP, BOOTP, DHCP, ARP, ICMP, DNS, WINS, HTTP, LPR, HTTP, Apple EtherTalk, IPv6, ICMPv6, Bonjour, Netware V5, V6, POP3, SMTP
Network Security:	IP/Mac address filtering, protocol filtering, port management
Configuration Method:	Web-based management system with user/administrator level login security

Operating Environment

Operating Temperature:	41° to 95° F
Relative Humidity:	15% to 85% non-condensing
Power:	DX-B350P: AC 110-120 VAC, 60HZ, 9.8 AMPS DX-B450P: AC 110-120 VAC, 60HZ, 11.0 AMPS
Power Consumption:	DX-B350P: Maximum: 1,000 W Power Save Mode: Maximum 9 W DX-B450P: Maximum: 1,225 W Power Save Mode: Maximum 11W
Energy Savings Compliance:	DX-B350P: ENERGY STAR [®] qualified DX-B450P: ENERGY STAR qualified when used with the optional DX-DUX2 duplex unit

Paper Drawer (Option)

Tray Capacity:	Up to 550 sheets
Power Source:	Supplied from the main unit
Weight:	Approx. 18.7 lbs
Dimensions:	16-39/64" (w) x 17-25/32" (d) x 5-10/16" (h) Adds 3-35/64" to overall height when installed

Duplex Unit (Option)

Output Capacity:	Up to 500 sheets
Output Delivery:	Face down
Power Source:	Supplied from the main unit
Offset:	Approx. 1" (25mm)
Weight:	Approx 4.2 lbs
Dimensions:	DX-B350P: 13.85" (w) x 3.78" (d) x 8.60" (h) DX-B450P: 13.85" (w) x 5.76" (d) x 9.37" (h)

Offset Catch Tray (Option)

Output Capacity:	Up to 500 sheets
Output Delivery:	Face down
Power Source:	Supplied from the main unit
Offset:	Approx. 1" (25mm)
Weight:	Approx. 5.7 lbs
Dimensions:	16.45" (w) x 12.30" (d) x 8.91" (h)

Accessories

DX-CSX1:	550 sheet adjustable paper drawer (For DX-B350P)
DX-CSX2:	550 sheet adjustable paper drawer (For DX-B450P)
DX-DUX1:	Duplex unit (For DX-B350P)
DX-DUX2:	Duplex unit (For DX-B450P)
DX-TEX1:	Offset catch tray
DX-HD50:	40GB hard disk drive kit
DX-SM50:	512MB expansion memory

Supplies

DX-B35DTH:	High yield (18K) toner cartridge (For DX-B350P) Declared yield value in accordance with ISO/IEC 19752
DX-B45DTH:	High yield (21K) toner cartridge (For DX-B450P) Declared yield value in accordance with ISO/IEC 19752



SHARP ELECTRONICS CORPORATION
Sharp Plaza, Mahwah, NJ 07495-1163
1-800-BE-SHARP • www.sharppusa.com

Design and specifications subject to change without notice. Sharp, My Sharp and all related trademarks are trademarks or registered trademarks of Sharp Corporation and/or its affiliated companies. Windows, Windows NT, Windows Server and Windows Vista are trademarks or registered trademarks of Microsoft Corporation. PCL is a registered trademark of Hewlett-Packard Company. Adobe and Postscript are registered trademarks of Adobe Systems Inc. All other trademarks are the property of their respective owners.